

Land At Junc Foredown Road & Fox Way

BH2021/00780



Brighton & Hove
City Council

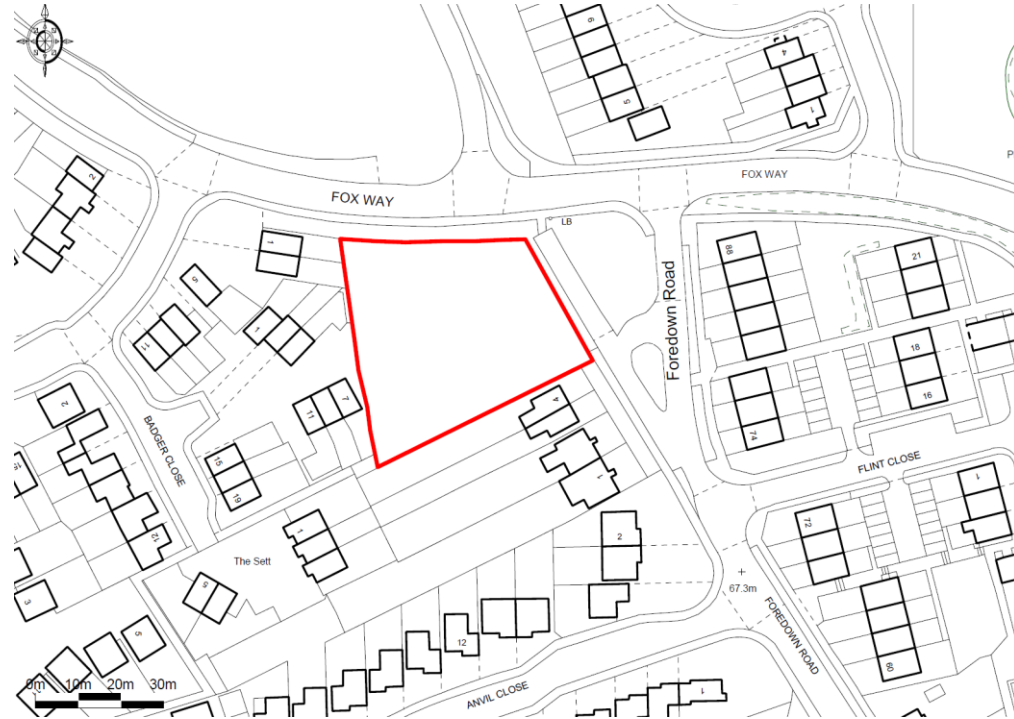
Application Description

- Outline application with all matters reserved apart from access for erection of 14no. two and three bedroom houses with associated car and cycle parking, changes to vehicular and pedestrian access.

Map of application site



Existing Site Location Plan



4

Indicative Site Layout



Aerial photo of site



3D Aerial photo of site



Street photos of site



Street photos of site



Photos of site



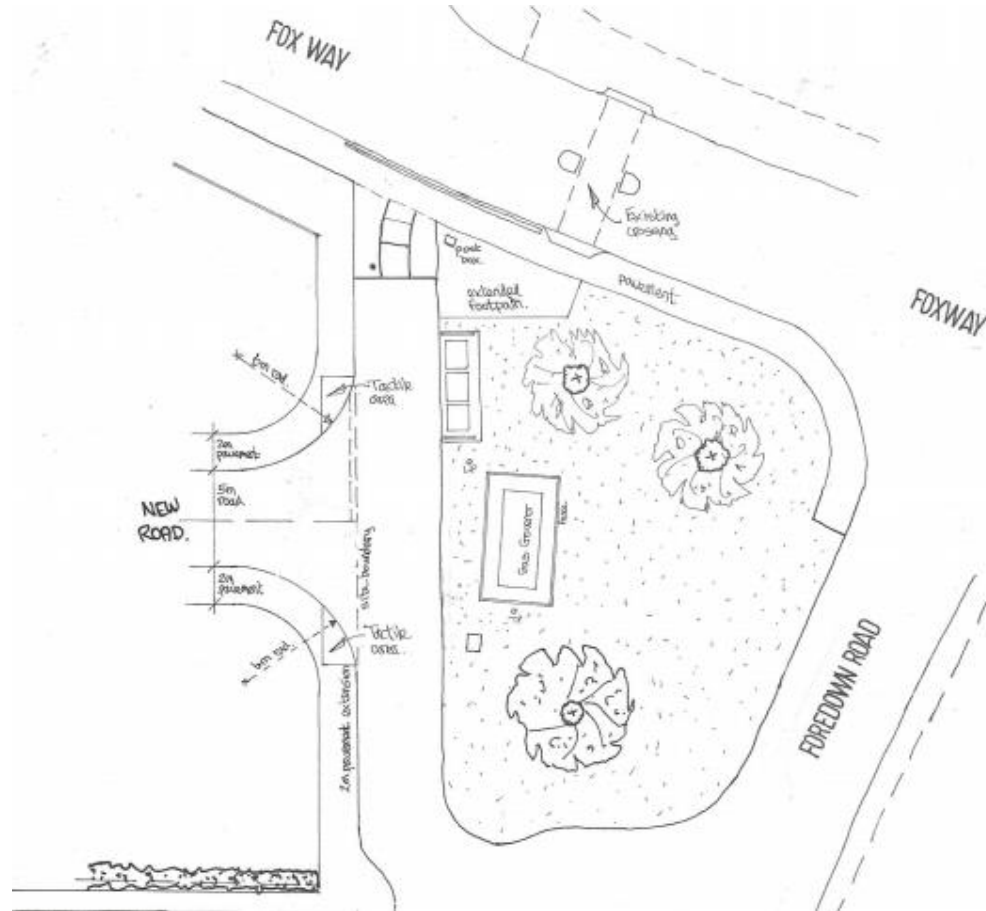
Photos of site



Photos of site



Proposed Access Details



13

Feasibility Site Layout (information only)



14

Key Considerations in the Application

- Principle of development
- Unit mix
- Density
- Site access

Conclusion and Planning Balance

- It would provide 14 units of residential accommodation in Portslade - principle of contributing to housing need given great weight;
- Unit mix and density considered acceptable;
- No adverse impact on highway safety anticipated.

The proposed development is therefore recommended for **Approval**.